

Superior, Wisconsin is an ideal location consisting of a diverse workforce and community.

The *Jill Marcovich Bachinski* Building has a total of seven (7) suites. Our current tenants include Human Development Center, Shell's Daycare, and Family Forum Headstart, as well as others.

The building was constructed in 1991 and purchased by the Human Development Center in 2007.

The space for lease is currently vacant office space, and can be remodeled to suit your needs.

## PLEASE CONTACT

**GARY VOGT,  
FACILITIES DIRECTOR**

**218-393-6429**

**OR**

**MICHELE MCCORISON,  
FACILITIES ASSISTANT**

**218-302-8644**

**FOR MORE INFORMATION**

**OR**

**TO SCHEDULE A TOUR OF  
THE SPACE.**

*The Human Development Center is an  
Equal Employment/Affirmative Action  
employer.*

**Human  
Development  
Center**

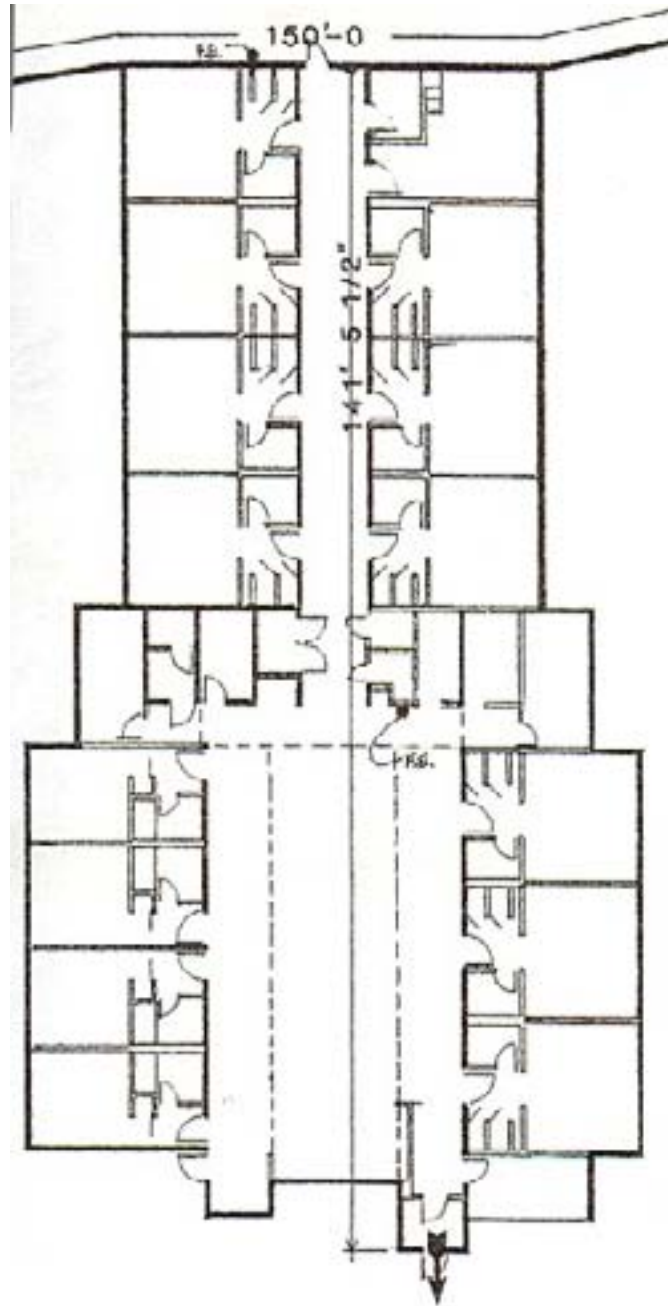
**OFFICE SPACE  
FOR LEASE**



**Jill Marcovich Bachinski Building  
1500 North 34th Street  
Superior, WI 54880**

## What we offer

- While the suite is attached to the main building, the space affords a sense of privacy and separation. There is a large grassy area on two sides of the suite with room for outdoor uses, such as picnic tables, etc.
- Phone and Internet service is provided by Century Telephone; there are, of course, other ISP options available as well.
- Parking is available at no additional cost and should exceed any needs you may have.
- We offer on site maintenance as well as 24/7 emergency call support.
- The building and suites are designed in such a way to allow you install a security system if you so choose.



## Costs and Amenities

Cost per square foot annually (dependent on remodeling needs)	<b>\$6.00 And up</b>
Interior paint prior to occupancy	<b>Included</b>
On site maintenance staff and 24/7 emergency call support	<b>Included</b>
Electricity, Heating/Cooling, Water, Sewer, Recycling/ Garbage	<b>Included</b>
Parking	<b>Included</b>
Cleaning Services (available if needed)	<b>Negotiable</b>